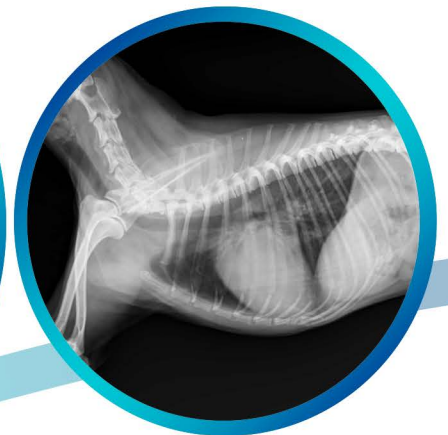


# examvue CR PRO

for Veterinary



## Specifications:

- Cassette Sizes: 14x17",10x12",8x10"  
*\*System Package includes two: 14x17" Cassette/IPs*
- System Set-up Options: Tabletop • Vertical wall mount
- Resolution: 100um/200um
- Data Capture:16-bits per pixel, 65,535 gray scale
- Dimensions (HxWxD): 5.3" x 17.5" x 31.3" (134 x 444 x 795 mm)
- Weight: 46lbs (21.5kg)

## Workstation and Monitor

- Windows 7 Professional 32 Bit
- Intel Processor
- 500 GB HDD
- 4 GB RAM
- 16x CD/DVD +/- RW
- 21.5" LED Monitor

High  
Resolution  
Images

70  
PPH

## Acquire Software:

- DICOM Send,DICOM Print,CD/DVD Burning
- Multi Frequency Image Processing
- Zoom, Cropping, Mark, Window Level
- User Defined LUT
- Saving of measurements & annotations
- Embedded viewer

## Viewing License:

- Distance comparison
- Norberg angle and Cobb angle measurements
- Vertebral heart score (VHS)
- TPA Measurement (optional)
- PACS connectivity for easy image comparison
- Prints on both DICOM and off ice printers
- DICOM Send/Recieve/Print
- Viewing via network/internet
- Image stitching

Easy  
to use  
Software

Lightweight

## Regulatory approvals:

- FDA 510(k) Premarket Notification
- CE (0120)
- UL, cUL, FCC
- Health Canada Certification

## Dental Upgrade:

- 10x14 Cassette housing and template
- Imaging Plate Starter Kit:Two(2) size 2 IP size  
One(1) x IP size 4



\*JPI Reserves the right to change specification without notice

Authorized Dealer

JPI Healthcare Solutions Inc.  
52 Newtown Plaza Plainview NY 11803  
Toll Free: 888-574-2001  
Tel: 516-513-1330  
Fax: 516-513-1331  
www.jpihealthcare.com